



Benjamin A. Gilman International Scholarship Program

How you can apply for a scholarship to study or intern abroad



The Power
of International
Education

The Gilman Program is sponsored by the U.S. Department of State's Bureau of Educational and Cultural Affairs (ECA) and is supported in its implementation by the Institute of International Education (IIE).

The U.S. Department of State's Gilman Program provides scholarships of up to \$5,000 to **talented American undergraduate students** with high financial need to **study or intern abroad for academic credit.**



The Power
of International
Education

The Gilman Program is sponsored by the U.S. Department of State's Bureau of Educational and Cultural Affairs (ECA) and is supported in its implementation by the Institute of International Education (IIE).



Gilman Scholar Snapshot



The Power
of International
Education

The Gilman Program is sponsored by the U.S. Department of State's Bureau of Educational and Cultural Affairs (ECA) and is supported in its implementation by the Institute of International Education (IIE).

Who are Gilman Scholars?

- **100%** are Pell Grant recipients
- **50%+** are first-generation college students
- **65%** come from small towns or rural communities
- They come from **1,300+** U.S. campuses, including two-year colleges, from **all 50 states**
- They are pursuing a **variety of careers** in business, technology, health care, education, engineering, science, law, diplomacy, **and so much more**



The Power
of International
Education

The Gilman Program is sponsored by the U.S. Department of State's Bureau of Educational and Cultural Affairs (ECA) and is supported in its implementation by the Institute of International Education (IIE).

What do Gilman Scholars do?

- Study or intern in **170+** countries
 - Students choose their destination country and a **credit-bearing program**.
 - Students can **opt** to apply for additional funds through **supplemental Gilman scholarship awards** for studying critical need languages and STEM field coursework. This additional funding is optional to apply for.
 - There's **no minimum program length**, and students can be abroad for up to one academic year. Gilman Scholars can be abroad during any term, including academic year, fall, spring, summer, winter/J-term, and spring break.
- Complete a **Follow-On Service Project** to share what they've learned with their communities in the U.S.



The Power
of International
Education

The Gilman Program is sponsored by the U.S. Department of State's Bureau of Educational and Cultural Affairs (ECA) and is supported in its implementation by the Institute of International Education (IIE).

Benefits of Being a Gilman Scholar

- Join a network of **44,000+ Gilman alumni!**
- Invitations to **career workshops** and **networking** events
- Invitations to **special events** and **seminars**
- Opportunity to be an **Alumni Ambassador**
- Access to the **Gilman Scholar Network**, an online platform where Gilman alumni connect, ask for mentorship, career guidance, and much more
- Scholarships or tuition discounts for graduate programs at Thunderbird School of Global Management at Arizona State University and Middlebury Institute of International Studies at Monterey



The Power
of International
Education

The Gilman Program is sponsored by the U.S. Department of State's Bureau of Educational and Cultural Affairs (ECA) and is supported in its implementation by the Institute of International Education (IIE).



About the Program



The Power
of International
Education

The Gilman Program is sponsored by the U.S. Department of State's Bureau of Educational and Cultural Affairs (ECA) and is supported in its implementation by the Institute of International Education (IIE).

U.S. Department of State

A Program within the Bureau of Educational and Cultural Affairs

Established by the U.S. Congress, the Benjamin A. Gilman International Scholarship Program is an initiative of the U.S. Department of State's Bureau of Educational and Cultural Affairs and is supported in its implementation by the Institute of International Education (IIE).

The Bureau of Educational and Cultural Affairs (ECA) designs and implements educational, professional, and cultural exchange and other programs that create and sustain the mutual understanding with other countries necessary to advancing United States foreign policy goals.

→ Learn more at state.gov/ECA



The Power
of International
Education

The Gilman Program is sponsored by the U.S. Department of State's Bureau of Educational and Cultural Affairs (ECA) and is supported in its implementation by the Institute of International Education (IIE).

Guide to the Gilman Program

Gilman Program

- Undergraduate students
- Federal Pell Grant recipients
- Scholarships of up to **\$5,000**
- Two application cycles a year (*Deadlines in early March and early October*)

Supplemental Awards (*Optional*)

- Critical Need Language Award
- STEM Field Coursework

Gilman-McCain Program

(Opportunity offered under the umbrella of the Gilman Program)

- Undergraduate students who are child or spousal dependents of active or activated U.S. military personnel
- Recipients of any type of Title IV Federal Financial Aid
- Flat **\$5,000** award
- Apply during the Gilman Program application cycles
 - Also able to apply during two dedicated Gilman-McCain application cycles (*Deadlines in early August and early January*)



The Power
of International
Education

The Gilman Program is sponsored by the U.S. Department of State's Bureau of Educational and Cultural Affairs (ECA) and is supported in its implementation by the Institute of International Education (IIE).

Gilman Program Eligibility

- U.S. citizen or national
- Undergraduate student
- Federal Pell Grant recipient
 - During time of application or time abroad
- Program Requirements:
 - Must be credit-bearing
 - Must be in a country or area with a Travel Advisory Level 1 or 2
 - No minimum program length!



The Power
of International
Education

The Gilman Program is sponsored by the U.S. Department of State's Bureau of Educational and Cultural Affairs (ECA) and is supported in its implementation by the Institute of International Education (IIE).

Gilman-McCain Eligibility

- U.S. citizen or national
- Undergraduate student who is a **child or spousal dependent of active service members** (must be active or activated at the time of application)
- **Title IV federal financial aid recipient during the time of application or time abroad**
 - Includes Pell Grant, federal work-study, and more
- Program Requirements:
 - Must be credit-bearing
 - Must be in a country or area with a Travel Advisory Level 1 or 2
 - No minimum program length!



The Power
of International
Education

The Gilman Program is sponsored by the U.S. Department of State's Bureau of Educational and Cultural Affairs (ECA) and is supported in its implementation by the Institute of International Education (IIE).

Supplemental Award: CNLA

Critical Need Language Award

- Receive up to an additional **\$3,000** to study a critical need language
- Access to free proficiency testing (ACTFL Oral Proficiency Interview) to demonstrate language proficiency for educational and professional purposes
- Apply by writing an additional essay during the Gilman application
- Can study critical need languages in sign language

Eligible Languages	
Arabic	Persian
Azerbaijani	Portuguese
Bahasa Indonesia	Punjabi
Bangla	Russian
Chinese (Mandarin)	Swahili
Hindi	Turkish
Japanese	Urdu
Korean	



The Power
of International
Education

The Gilman Program is sponsored by the U.S. Department of State's Bureau of Educational and Cultural Affairs (ECA) and is supported in its implementation by the Institute of International Education (IIE).

Supplemental Award: STEM

STEM Coursework Award

- Receive up to an additional **\$1,000** towards STEM-related coursework with a lab element
- Must already be formally integrated into their credit-bearing program
- Open to students in STEM & non-STEM majors
- Apply by writing an additional essay during the Gilman application

Award may be used for:

Lab fees

Required equipment

Fees related to conducting research (*Internet, phone, printing costs, etc.*)

Transportation required to conduct research

...and more!



The Power
of International
Education

The Gilman Program is sponsored by the U.S. Department of State's Bureau of Educational and Cultural Affairs (ECA) and is supported in its implementation by the Institute of International Education (IIE).



How to Apply



The Power
of International
Education

The Gilman Program is sponsored by the U.S. Department of State's Bureau of Educational and Cultural Affairs (ECA) and is supported in its implementation by the Institute of International Education (IIE).

Application Requirements

Gilman & Gilman-McCain Program Applications

1. Student Application

- Program information
- Essay responses
- Unofficial transcript(s)
- Choose campus advisors to certify
 1. Study Abroad Advisor
 2. Financial Aid Advisor

2. Advisor Certification

- Study Abroad Advisor
 - Verify program information, including total costs
 - Confirm that the student is in good academic standing
- Financial Aid Advisor
 - Verify Pell Grant or Financial Aid Status

*Applications without advisor certifications
are not considered*



The Power
of International
Education

The Gilman Program is sponsored by the U.S. Department of State's Bureau of Educational and Cultural Affairs (ECA) and is supported in its implementation by the Institute of International Education (IIE).

Application Essays

The application requires **four short essays**:

1. Motivations for Studying or Interning Abroad *(500 word max)*
2. Knowledge and Skill Development through Studying and Interning Abroad *(500 word max)*
3. Gilman Scholars as Citizen Diplomats *(500 word max)*
4. Contributions to U.S. communities and Follow-On Service Project Proposal *(500 word max)*



The Power
of International
Education

The Gilman Program is sponsored by the U.S. Department of State's Bureau of Educational and Cultural Affairs (ECA) and is supported in its implementation by the Institute of International Education (IIE).

Application Essay: CNLA

Critical Need Language Supplemental Award

Students applying for the **Critical Need Language Award (CNLA)** must submit an additional essay (300 word max) answering the following questions:

- What are your motivations for learning and/or improving proficiency in your targeted language for your academic and/or career success?
- Describe your plan to develop your language skills while studying abroad, both inside and outside of the classroom setting.



The Power
of International
Education

The Gilman Program is sponsored by the U.S. Department of State's Bureau of Educational and Cultural Affairs (ECA) and is supported in its implementation by the Institute of International Education (IIE).

Application Essay: STEM

STEM Supplemental Award

Students applying for the **STEM Supplemental Award** must submit an additional essay (*300 word max*) answering the following questions:

- Please summarize your STEM-related coursework overseas and how it contributes to your future academic and/or career goals.



The Power
of International
Education

The Gilman Program is sponsored by the U.S. Department of State's Bureau of Educational and Cultural Affairs (ECA) and is supported in its implementation by the Institute of International Education (IIE).

Essay Tips

Ensure you submit a competitive application

- Double-check the **requirements**: Make sure you're answering **all** the prompt questions and following the word limit and formatting requirements.
- **Work with your advisor**: They'll have insight into what makes for a competitive essay.
- Ask someone to **proofread**: Go to a writing center or professor to ask for feedback. They can note where you may need to clarify.



The Power
of International
Education

The Gilman Program is sponsored by the U.S. Department of State's Bureau of Educational and Cultural Affairs (ECA) and is supported in its implementation by the Institute of International Education (IIE).

Selection Criteria

How your Gilman Program application will be reviewed



Impact of Program and Destination on Student's Academic & Career Trajectory



Preparedness for Program Abroad

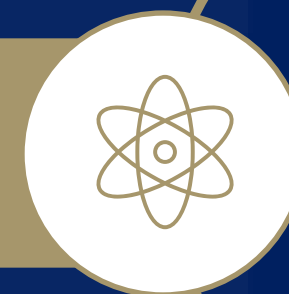


Representing America Abroad and Hometown Impact

CNLA: Commitment to Proficiency in a Critical Need Language



STEM: Commitment to a STEM Field



The Power
of International
Education

The Gilman Program is sponsored by the U.S. Department of State's Bureau of Educational and Cultural Affairs (ECA) and is supported in its implementation by the Institute of International Education (IIE).



Application Deadlines



The Power
of International
Education

The Gilman Program is sponsored by the U.S. Department of State's Bureau of Educational and Cultural Affairs (ECA) and is supported in its implementation by the Institute of International Education (IIE).

Application Cycles

Gilman & Gilman-McCain Programs

Programs starting
Dec 2025 – Oct 2026

September
Application Opens

Oct 10, 2025, 11:59 PM PT
Advisor Certification Deadline

Oct 3, 2025, 11:59 PM PT
Student Application Deadline

December
Scholarship Notifications

Programs starting
May 2025 – Apr 2026

Mid-January
Application Opens

Mar 10, 2025, 11:59 PM PT
Advisor Certification Deadline

Mar 3, 2025, 11:59 PM PT
Student Application Deadline

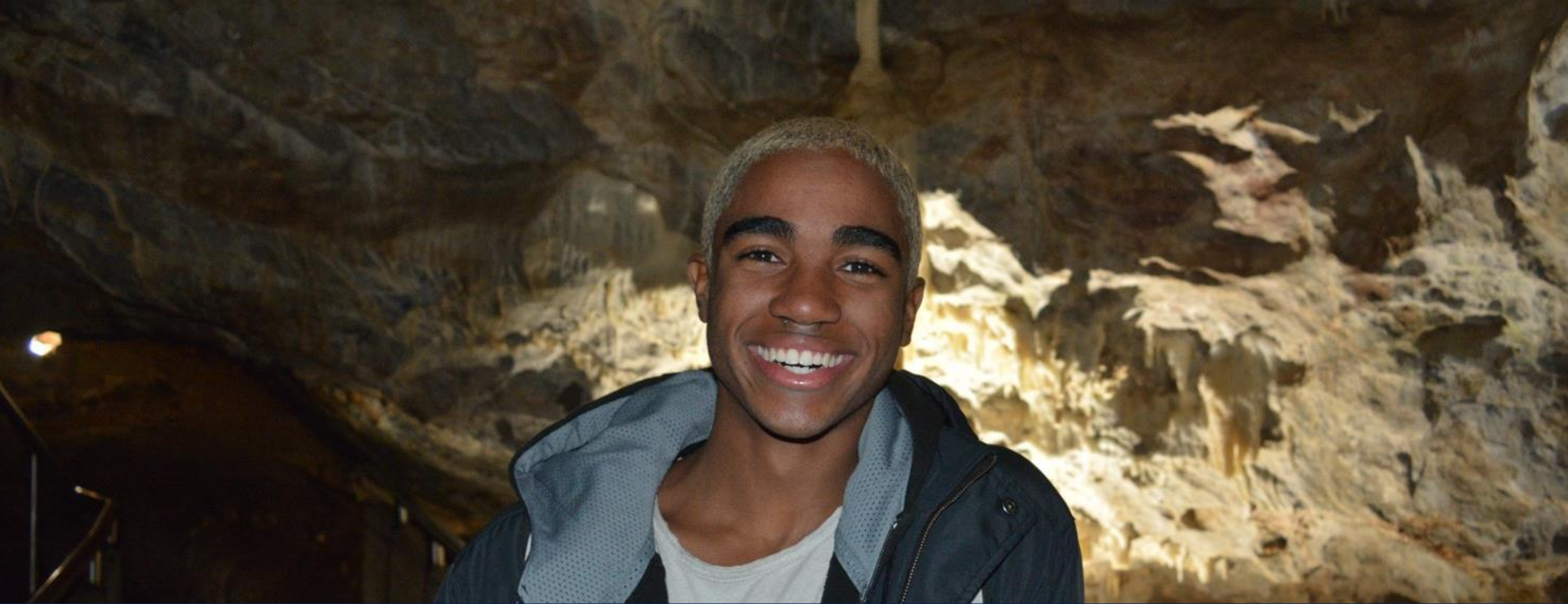
May
Scholarship Notifications

There are two additional application cycles for **Gilman-McCain Program applicants opening in July and December.*



The Power
of International
Education

The Gilman Program is sponsored by the U.S. Department of State's Bureau of Educational and Cultural Affairs (ECA) and is supported in its implementation by the Institute of International Education (IIE).



Resources



The Power
of International
Education

The Gilman Program is sponsored by the U.S. Department of State's Bureau of Educational and Cultural Affairs (ECA) and is supported in its implementation by the Institute of International Education (IIE).

Stay Connected



 [GilmanScholarship.org](https://gilmanScholarship.org)

 Gilman@iie.org  800.852.2141 Ext. 1

 Benjamin A. Gilman International Scholarship

 @GilmanScholarship

 @GilmanScholarshipProgram

 @GilmanProgram

 GilmanScholarship



The Gilman Program is sponsored by the U.S. Department of State's Bureau of Educational and Cultural Affairs (ECA) and is supported in its implementation by the Institute of International Education (IIE).

Advisor Resources

Tools to learn, connect with other advisors, and support your Gilman applicants

Learn & Connect

- Advisor Newsletter
- Advisor Facebook group
- Webinars, office hours and more
- Serve as a Selection Panelist
- Email: GilmanAdvisors@iie.org

Outreach Resources

- Flyers, presentations, images and more



GilmanScholarship.org/advisors/outreach-tools-2



The Power
of International
Education

The Gilman Program is sponsored by the U.S. Department of State's Bureau of Educational and Cultural Affairs (ECA) and is supported in its implementation by the Institute of International Education (IIE).